



MEET

BIO ROYAL JELLY

**BIOLOGICAL
NUTRITIONAL
SUPPLEMENT WITH
HONEY AND ROYAL
JELLY**

Royal jelly, particularly rich in vitamins (especially Vitamin B) and amino acids, is particularly relevant to people who are tired and stressed, and gives them more vitality.

Standard: FR-BIO-10
EU/non-EU agriculture

20 drinking ampoules, 10 ml each

Just a couple of words about bananas

Bio royal jelly detailed information

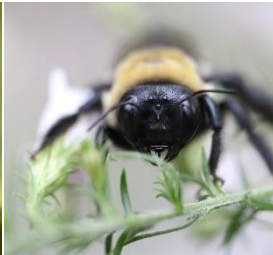
For young people, royal jelly increases resistance to fatigue and hard work and stimulates growth. Our royal jelly comes from organic apiculture and is treated under sterile conditions for better stability. Jelly Royal, particularly rich in vitamins PP, B and E, basic amino acids, as well as peptides, growth factors and immune globulins, especially to people tired and stressed. This product prevents and treats the flu and reestablishes the balance of the sympathetic system. Used on young people, royal jelly increases vitality, resistance to fatigue, and growth. You can take it with a bit of honey to reduce the taste.

Fact #1 Ingredients: Processed water, BIO Floral Honey*, BIO Royal Jelly* (15%). * 100% of ingredients of agriculture origin meet the requirements of organic agriculture.

Fact #2 Usage recommendations:: 1 ampoule per day, preferably on an empty stomach in the morning. Drink in its pure form or add to any drink, tea or fruit juice.. Net volume: 200 ml.

Fact #3 Safety measures: - Nutritional supplements do not substitute any healthy balanced meal. - Do not exceed the recommended daily dose. - Keep in a dry warm place out of heat. - Keep out of the reach of children

Fact #4 Standard: FR-BIO-10; EU/non-EU agriculture; 20 drinking ampoules, 10 ml each





Subject:

Usage recommendations:

Course of medication length:

Target audience:

Shelf life

Fitness – Life powers – Body Defenses

1 ampoule per day, preferably on an empty stomach in the morning.

Drink in its pure form or add to any drink, tea or fruit juice.

20 days (10 ml per day)

Adults with lack of energy

36 months




Specifications:

20 drinking ampoules, 10 ml each

Nutritive value per 1 ampoule (10 ml)


- BIO Floral Honey*: 5 g

- BIO Royal Jelly*: 1.5 g



Royal jelly is secreted from the hypopharyngeal glands of honey bee workers. It is a powerful nutrition that allow larvae to develop up to 2000 times per day. Royal jelly contains natural amino acids, trace minerals and vitamins.

Positive impacts of this product have been known since ancient times. Royal jelly has multiple effects: it increases the body stamina, gives additional powers for external factors resistance, improves resistance to various life troubles.



Standard: FR-BIO-10
EU/non-EU agriculture

All accusations related to royal jelly have received negative feedback from European Food Security Agency (EFSA).

Just call us right now

Strong partnership can be born now



CONDITIONS AND PRICES

Sales unit: 1 pack with 24 ampoules 10 ml x BIO Royal Jelly 1,500 mg:
10.45 euro, without VAT

Minimum volume of delivery: 2 pallets x 21 boxes x 24 units: 1,008 units

Pallet weight: 218 kg